

One Good Turn

Coulee Region Woodturners



Chapter of the American Association of Woodturners

February 2022

www.crwoodturner.com

Volume 22, Issue 2

Please start your planning for April and a day with Alan Lacer. \$30 in advance to attend. \$35 for walk-ins. We need your commitment of attendance early if at all possible, since fees and costs will be ~\$1000. Alan's info here— <https://www.alanlacer.com/>

Treasurer's Notes

2022 dues are due.

You can mail dues to Jay Johnson, 703 Granum St., Holmen, WI 54636, or pay at the February Meeting. \$36 for single membership, \$50 for Family membership, \$25 for Seniors over 80. Thanks! Jay J.

Against the Grain

From the Lathe of the President

Welcome to spring, and back to winter, and then a spring tease again. Hopefully everyone has made it through the bitter cold and are looking forward to the warmth of the sun and less layers when we leave the house.

Even though the world is frozen our club is moving forward. We continue to discuss the possibility with moving to Luther high school as a sponsored club. The board and I are taking measured steps to ensure that this will be in the best interest and benefit to the club and the school moving forward.

I am pleased to see all the wig stands that members have created for our community outreach. It is through your continued goodwill and demonstration of the versatility in woodturning that the clubs name get put out there in a positive way. Please keep it up, and thanks.

Also we have made contact with Holmen High School, a program we have worked with in years past. We have agreed to do a general demo March the 8th and a hands on pen demo at a date to be determined. I hope that we can have a good turnout for the demos. May the chips fly and your tools be always sharp.

In Service
James Bloomer

Found in the Wood Chips Under My Jet:

John Griffiths, Program Director

I swept under my lathe this morning and found some tidbits.

The February meeting should be very educational. One of our members, Ken Garden from Richland Center, will be demonstrating turning weed or twig pots and small boxes. These are always fun to make and they can range from formal and sort of perfect to having all sorts of distressed wood, twisted grain, bark inclusions and heaven knows what else to add character, whimsy and quirkiness. And he might even discuss the eternal dilemma of box making - how to fit the lid for the slightest vacuum when taking it off or a tiny bit loose so it can be lifted off with one hand. Only one way to find out folks, and that is to attend, either in person or online. We will have it Zoomed and I think it also will be recorded for the club library.

Now in March, we will regress from modern variable speed lathes to a spring pole lathe. David Susag from the Rochester MN club will bring his spring pole lathe to our meeting and show how it works. Reviewing the origins of our hobby is always informative (and makes me really, really appreciate of electricity. These lathes are what the old time wood bodgers in England used when they set up shop in a forest and turned out mostly spindles from green wood for all

sorts of purposes on a production basis. Wow! That wears me out to even think of it. And like always, we will have the equipment set up to Zoom it as well as the live, in-person coffee drinking, donut eating story telling social event.

And while I am expounding on our activities, I must mention the upcoming April meeting. That will be a dandy. We will host Alan Lacer for an all-day-event at the Community Center. Lunch will be provided and we will be charging admission to cover expenses. Alan has demonstrated for us before and, trust me, he is a master. He is famous for his work with the Devil's Can Opener, aka the skew.

Now he does not just use it as a negative rake scraper or for making dovetail tenons, he uses it as it was intended, making fine cuts, creating graceful curves in a spindle, turning beads and so on. He even will probably try to persuade us to give up our oval skewers. I am sure he will be selling his tools, so bring along some money if you will want to indulge yourself. We are urging everyone to attend this meeting. We have committed to a substantial expense and we hope to cover our costs. The board has not yet set the fee but you will be notified when we do. Obviously, the more attendees, the lower the individual fee.

Keep those chips flying, and be safe,
John

Community Outreach

From Katrice Sisson at Winona Health Foundation.

"I was able to connect with our cancer care coordinator and she has 4 patients currently that would really appreciate a wig stand."

"I also have passed along your contact information to our volunteer coordinator that works with a decorated Christmas tree fundraiser. The proceeds from that go directly back to the hospital to improve care and services for patients."

"Thank you for touching base!"

Katrice

ksisson@winonahealth.org

507.474.3050

Community Outreach

Holmen High School

Our Club has been asked to give a Demonstration at Holmen H.S. on Tuesday, March 8th. Interested Members are asked to sign up at our February meeting. It's an opportunity to show your Crafts and Skills. We would like to have 6 members turning. It means you bring your lathe and tools and a couple of pieces of wood to turn. Also it's a chance to show your finished work.

This is a Demo for students to watch and perhaps become interested in wood turning.

If you are interested but unable to attend this next meeting, contact any officer about your interest in turning or helping with this event.

CRW Mission Statement: To promote, to educate, and to inspire ourselves and others in the fine art of turned wood.

CRW Officers



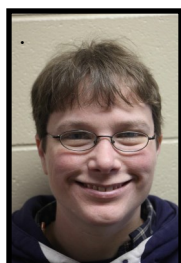
President

Jim Bloomer



Vice President

John Fisher



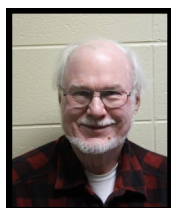
Secretary

Kris Clough



Treasurer

Jay Johnson

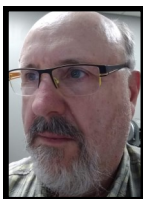


Program Director

John Griffiths

griff@mwt.net

Technical Advisors



Newsletter
Editor

Aaron Gesicki

303-551-2450

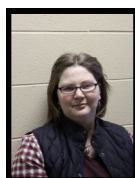
AaronAGesicki@Gmail.com



Club photographer

Kevin Vossler

kvosslerwi@aol.com



Librarian

Virginia Green

608-217-5756

varum527@hotmail.com



Webmaster

Ken Grunke

608-625-2412

kengrunke@gmail.com



Tool Czar

Bob Raasch

608-769-3833

raaschb@charter.net



Asst. Librarian

Jack Fitzpatrick

CRW Club Mentors

All areas of turning and finishing. Duane Hill
Onalaska, WI. 608-783-0883 dlh@dairynet.com

Segmented Turning. Phil Miller La Crosse, WI.
792-1497 mpmopc@gmail.com

Experimentation, tool making, and metalworking.
Ken Grunke La Farge, WI 608-625-2412
kengrunke@gmail.com

Spindle turning. John Fisher Holmen, WI.
608- 526-4692 minnow1974@charter.net

Jan 2022 Meeting



Aaron Gesicki—all 3 donated to New Horizons Shelter



Lavonne Swiggum



Name *Don Morovits*
Species *SHAL + Bass W*
Finish *Typic Waf*



John Griffiths

Jan 2022 Instant Gallery



All on this page by Wendell Ziegler

Jan 2022 Instant Gallery



A Platter by Laverne Massman

Freebie!!!

Did you know that your friends and unaffiliated chapter colleagues can sign up to get all the benefits of online AAW membership **FREE?**

Once they sign up, they'll get full access to all digital content including AAW publications *American Woodturner* and Woodturning FUNdamentals. Plus, they'll get weekly and bimonthly e-newsletters, and have access to Explore, Video Source, online learning portals, optional public profile as a Demonstrator and/or Maker with image availability, and more. **All of this is FREE for up to 90 days.**

Here's where to sign up online.

https://www.woodturner.org/Woodturner/Join-Pages/Affiliate-Membership.aspx?_zs=AR2ib&_zl=H0Nv2

Alternatively—

The American Association of Woodturners
651-484-9094 direct or 877-595-9094 toll free U.S.
75 W 5th St, 222 Landmark Center, St. Paul, MN 55102

CRW Activities Schedule

Feb. 19, 2022	Ken Garden: Demo on box making and weed pots.
March 19	David Susag: Spring Pole Lathe.
April 16	Alan Lacer: Professional, all day, Fee to attend, topics to be determined.
May 21	Marvin Meyer: Fluting with a router on the lathe.
June 18	Aaron Gesicki: Making a hook tool. Involves grinding and fire, thus the meeting will be outside in the pavilion.
July 16	John Fisher: Turning a plant stand.

Demonstrators





Aaron Gesicki / Editor
1317 Woodpark Road
Winona, MN 55987
Phone: 303-551-2450
Email: AaronAGesicki@Gmail.com

"A Turn For the Better"

February Meeting Program -

CRW member Ken Garden does weed pots and boxes.

See you there.

Next Meeting

Saturday

February 19, 2022 at 9 am.

Here's a map to help those who aren't sure where we meet. It's the Onalaska Community Center 515 Quincy St., Onalaska, WI.
608-783-9290

We'll start the program promptly at 9 am, so get there early to avoid getting a Uecker Seat.

We'll have coffee, so
Chocolate donuts are
ALWAYS
Welcomed.

