

# One Good Turn

Volume 6, Issue 3

March 7, 2006

*Coulee Region Woodturners Chapter of the American Association of Woodturners*

## **Next Meeting—Sat., March 18, 2006, 9:00 AM ☺ — at the Falch Studio in Winona, Mn.—Hollowing Tools Demo**

So, you want to try hollowing, but don't know what tool to buy. Or, you've tried hollowing and either don't like the tool you have or want to add to your collection. Well, here's your opportunity to see a bunch of different hollowing tools in action and test them out yourself! This month's demo is the hollowing tool comparison by three CRW members. Duane Hill will be showing off his expertise with the Basham and Johnson hollower, Don Derry's reverse hollowing system, and the Hamlet hollowing tool. Denis Falch will demonstrate the Jamieson hollowing

system complete with laser and homemade arrester for deep hollowing. Pam Reilly will plug her favorite tool for small hollowing, the Sorby multi-tip tool, as well as it's Texas-style big brother. We'll show you how these various tools work, what depths they're good for, and you'll be free to give them a test run and see for yourself what you like or don't like about each one. Denis is always great about having an extra faceshield available, but if you're at all interested in testing out one or all of the hollowers, you might want to bring your own faceshield along to the meeting.

As an extra, Pam will be kicking off the demonstration with a brief lesson on general lathe safety.

**PrezSez** For you sports buffs, March Madness is here. That's when you sit in front of the TV and watch nearly an unending supply of basketball games. It is also the time for state high school basketball tournaments. A lot of stuff going on and excitement is in the air. Well that is also true of CRW. We have a lot of stuff in the works and the excitement is building.

First off, I would like to both thank those who were at the last meeting and also apologize to them. I would like to thank them for the much needed discussion we had on the club's finances. I know some people were saying that this is a woodturning club, why do we need to take up meeting time with a financial discussion. Unfortunately, it is one of those things we need to do in order to keep the club running on track. The discussion really help set direction for the Officer's and Program Committee. I also want to apologize for the length of the discussion. It was long, but, again, it was very necessary. Thank you for your indulgence and patience.

For those of you who missed the meeting, the general results of the financial discussion were:

- 2-3 professional demonstrations per year
- A separate checking account for professional demonstrations is not necessary. The club would prefer to have any overages go into the general account for general club use. Accounting of expenditures for each professional demonstra-

tion will be expected.

- An upper limit is not placed on professional demonstrator fees. The club is relying on the judgment and research of the Officers and Program Committee to not get excessive for demonstrator fees.
- We would like to pay our local demonstrators and hosts more, and we will try, based on funding amounts

Speaking of finances (is that a collective groan I hear?), I need your opinion on something. Right now, the club owns a lathe, grinder, Wolverine sharpening system, Talon chuck and several other tools. Do you think the club should keep the other tools (other than the lathe, grinder, sharpening system and chuck)? If your answer is no, would you be in favor of having a silent auction for the rest of the tools. If your answer is yes, what other tools would you like to see the club purchase? Drop me a line and let me know what you think.

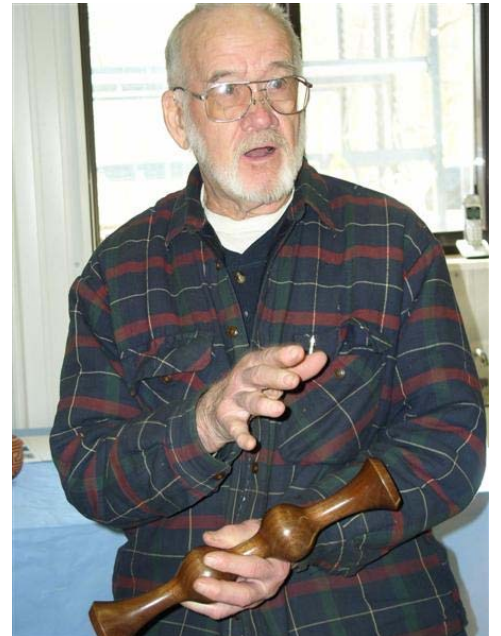
We are in the process for getting everything ready for the Bill Grumbine demonstration in April. Remember, his demo is the weekend of April 22 and 23, NOT the third weekend of the month. This is because Easter falls on the third weekend in April. The cost is \$60, before April 1. After April 1, the cost goes up to \$75. We are doing this in order to get a head count as early as possible. This looks like it will be a very full demo. Pam is getting a lot of questions from non-club members about attending. We will be giving priority to club members up to April 1. After that, you will have to battle the masses (besides paying more).

So make sure you get your checks to Bill Gautsch (payable to CRW) soon. If you are not familiar with Bill Grumbine, he is primarily a bowl turner. He also does a lot with the McNaughton coring system. He has a video out about taking a piece from the tree to a finished bowl. It is an excellent video. The video is in the club's library. Check it out. He is also in the process of making a second video on winged and natural edge bowls. We might be able to get a preview of it at his demo. He also maintains two websites, [www.wonderfulwood.com](http://www.wonderfulwood.com) (his selling site) and [www.ultradad.com](http://www.ultradad.com) (his personal site). Check both out. He has some great stories on his personal site.

The first challenge of 2006 has been issued. Teams of two will be turning vases and flowers for the April meeting. Three prizes will be issued. We have about 6 teams of turners looking to pursue this challenge. Good luck to all the participants.

Lastly, starting with the March meeting, you will be seeing some changes at the meeting. Mainly, I will not be running every meeting this year. I will be leading 4 of the meetings this year and members of the Board, or other members at large, will be leading the majority of the meetings. This accomplishes two things. It gets other people used to running the meetings and allows me some extra time to mix and mingle with you all, something I don't often get a chance to do. So if you see someone different running the meeting, be nice to them. If you think you might like to do this, let me know.

**February Meeting Review**





For those of you who did not make the meeting last month, we have a new challenge, the [Spring Flowers Challenge](#). This will be a collaborative challenge. The collaboration team then has 2 months (until the April meeting) to turn a vase with flowers. The flowers have to be wood, they cannot be real, silk, plastic, etc. The flowers must be from wood. There will be three prizes awarded.

Here are the teams for the Spring Flower Challenge:

- Greg Haugen & John Fuchsel
- Jim Cox & Dennis Snider
- Denis Falch & Aaron Gesicki
- Art Ustby & Rich Egan
- John Fisher & Duane Hill
- Bob Patros & Pam Reilly

Pairings were determined by a drawing. Any questions, give call Duane.

[Here is a list of area clubs and their websites.](#)

Check them out for upcoming events and demonstrations.

Minnesota Woodturners Association  
www.mnwoodturners.com

Zumbro Valley Woodturners  
www.zvwoodturners.org

Badger Woodturners  
www.badgerwoodturners.org

Chicago Woodturners  
www.chicagowoodturners.com



**Looking for members to host future meeting. Let the CRW Board or Program Committee know if you would host a meeting.**

[Open Shop Nights:](#)

Open Shop Nights for March will be March 9 and 23. Open Shop Nights are held on Thursday nights at Duane Hill's shop (808 Quincy in Onalaska) from 7-9 pm. The topic is whatever is being asked that night. All woodturning topics are open. We usually have a lot of fun and sometimes even learn something. See you there.

[Upcoming Events](#)

**March 9** Open shop at Duane Hill's Shop.

**March 18** Hollowing tool comparison - we just need to determine how many different tools will be shown. Duane Hill, Denis Falch & Pam Reilly will demo them. Location Denis Falch's Shop in Winona.

**March 23** Open shop at Duane Hill's Shop.

**April 22-23** Professional turner Bill Grumbine demo. Location B&B Studio in La Crosse.

**May 20** CRW member Pam Reilly will demo making Lidded Boxes. Location Reilly Shop.

**June 17** CRW member Ansel Heram will demo making lamps. Location is B&B studio in La Crosse.

**July 15** Professional turner Brian Simmons will demo Ar-

chitectural Turning. Location B&B Studios in La Crosse..

**August 19** CRW member Ken Grunke will demo making Inside Out Petal Vases. Location Picnic at Shorty's

**September 16** Fundamentals—Mini Lathe Hands on session. Location TDB.

**October 21-22** Professional turner Russ Fairfield. Location is B&B studio in La Crosse.

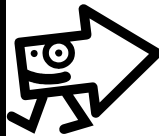
**November 18** CRW member John Fisher will demo plant stands. Location TBD.

**December 16** CRW member Greg Haugen will demo setting up a vacuum system. Location TDB.

**Want Ads/Sale Ads** If it's pertinent to woodworking or woodturning, get it to Art and he'll publish it in the newsletter.

**Remember Bill Grumbine demonstration in April 22 & 23.**

The cost is \$60, before April 1. After April 1, the cost goes up to \$75. Get your checks to Bill as early as possible.



**Reminder**


Some Library items are past due for return. Don't make us call Guido and give him your address. [Ed: You've been warned.]

**The Tool Tsar** wants to remind everyone that the crib has lathes, chucks, tools, and other hardware for member use. The inventory list is here

<http://www.crwoodturner.com/gallery/crwtools>

Just let him know what you want and make arrangements for pickup. Contact Greg Haugen - curlyhaugen@crwoodturner.com

Don't forget to [visit the Onalaska Gunderson Clinic](#) for the great CRW display. It worth the trip.

 The newsletter editor is always looking for interesting articles for the newsletter. If you have ideas or suggestions for articles, please let the editor know. If you have some favorite tips or tricks, been to an interesting store or just have something that will bring a smile to the readers, let me know.

**The Great River Folk Festival** is going to be August 26th and 27th, This again is going to be held in Lacrosse, As a group we have demonstrated there, but if you would like to have your own booth, the application deadline is April 1 (\$40.00 registration fee, \$50.00 after April 1st) So this is coming up very fast if you want to be in this show. Contact Kathy Fitchuk of Lacrosse at (608) 784-3033 or email her at GRFF@Juno.com for more information.

**INVENTORS**

**The Seven Rivers Region Innovations Fair** is coming to Onalaska, Wisconsin September 28, 2006. They are accepting applications from inventors in Wisconsin, Minnesota and Iowa for Bootstrap. If you have been building anything in the garage and maybe are looking to find a buyer for your product and maybe launch something into production, call (608) 785-8783 or 1-800-582-5182 or visit [www.uwlax.edu/sbdc](http://www.uwlax.edu/sbdc) for more information.

**Here are three ideas for the new CRW logo. Bring your ideas and suggestions to the next meeting.**



Coulee Region  
**WOODTURNERS**

La Crosse, Wisconsin



COULEE REGION



**WOODTURNERS**



LA CROSSE, WI



## TOOL DEFINITIONS

**DRILL PRESS:** A tall upright machine useful for suddenly snatching flat metal bar stock out of your hands so that it smacks you in the chest and flings your beer across the room, splattering it against that freshly painted airplane part you were drying.

**WIRE WHEEL:** Cleans paint off bolts and then throws them somewhere under the workbench with the speed of light. Also removes fingerprint whorls and hard-earned guitar calluses in about the time it takes you to say, "Ouch...."

**ELECTRIC HAND DRILL:** Normally used for spinning pop rivets in their holes until you die of old age.

**PLIERS:** Used to round off bolt heads.

**HACKSAW:** One of a family of cutting tools built on the Ouija board principle. It transforms human energy into a crooked, unpredictable motion, and the more you attempt to influence its course, the more dismal your future becomes.

**WISE-GRIPS:** Used to round off bolt heads. If nothing else is available, they can also be used to transfer intense welding heat to the palm of your hand.

**OXYACETYLENE TORCH:** Used almost entirely for lighting various flammable objects in your shop on fire. Also handy for igniting the grease inside the wheel hub you want the bearing race out of.

**WHITWORTH SOCKETS:** Once used for working on older British cars and motorcycles, they are now used mainly for impersonating that 9/16 or 1/2 socket you've been searching for the last 15 minutes.

**HYDRAULIC FLOOR JACK:** Used for lowering an automobile to the ground after you have installed your new brake shoes, trapping the jack handle firmly under the bumper.

**EIGHT-FOOT LONG DOUGLAS FIR 2X4:** Used for levering an automobile upward off a hydraulic jack handle.

**TWEEZERS:** A tool for removing wood splinters.

**PHONE:** Tool for calling your neighbor to see if he has another hydraulic floor jack.

**SNAP-ON GASKET SCRAPER:** Theoretically useful as a sandwich tool for spreading mayonnaise; used mainly for getting dog\*\*\*\* off your boot.

**E-Z OUT BOLT AND STUD EXTRACTOR:** A tool ten times harder than any known drill bit that snaps off in bolt

holes you couldn't use anyway.

**TWO-TON ENGINE HOIST:** A tool for testing the tensile strength on everything you forgot to disconnect.

**CRAFTSMAN 1/2 x 16-INCH SCREWDRIVER:** A large prybar that inexplicably has an accurately machined screwdriver tip on the end opposite the handle.

**AVIATION METAL SNIPS:** See hacksaw.

**TROUBLE LIGHT:** The home mechanic's own tanning booth. Sometimes called a drop light, it is a good source of vitamin D, "the sunshine vitamin," which is not otherwise found under cars at night. Health benefits aside, it's main purpose is to consume 40-watt light bulbs at about the same rate that 105-mm howitzer shells might be used during, say, the first few hours of the Battle of the Bulge. More often dark than light, its name is somewhat misleading.

**PHILLIPS SCREWDRIVER:** Normally used to stab the lids of old-style paper-and-tin oil cans and splash oil on your shirt; but can also be used, as the name implies, to strip out Phillips screw heads.

**AIR COMPRESSOR:** A machine that takes energy produced in a coal-burning power plant 200 miles away and transforms it into compressed air that travels by hose to a Chicago Pneumatic impact wrench that grips rusty bolts last over tightened 50 years ago by someone at Ford, and neatly rounds off their heads.

**PRY BAR:** A tool used to crumple the metal surrounding that clip or bracket you needed to remove in order to replace a 50 cent part.

**HAMMER:** Originally employed as a weapon of war, the hammer nowadays is used as a kind of divining rod to locate the most expensive parts not far from the object we are trying to hit.

**MECHANIC'S KNIFE:** Used to open and slice through the contents of cardboard cartons delivered to your front door; works particularly well on contents such as seats, vinyl records, liquids in plastic bottles, collector magazines, refund checks, and rubber or plastic parts.

**DAMNIT TOOL:** Any handy tool that you grab and throw across the garage while yelling "DAMNIT" at the top of your lungs. It is also the next tool that you will need.

**EXPLETIVE:** A balm, usually applied verbally in hindsight, which somehow eases those pains and indignities following our every deficiency in foresight.



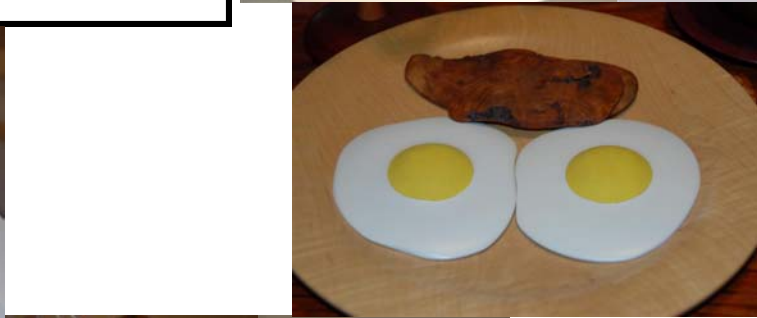
**Rochester Art Center Exhibit**

Hours are Tuesday through Saturday 10:00 am to 5:00 pm, Sunday Noon to 5:00 pm, Thursday 10:00 am - 9:00 pm. Closed Mondays and holidays. Exhibit is from January 28 to March 26.

Admission is \$3 for adults, \$2 for seniors (62 and over), free for students and members, free on Thursdays.

The Art Center is located at 40 Civic Center Drive SE, Rochester, MN 55904. From Highway 52, take the Second Street SW exit, head east. Proceed on Second Street until it comes to a "T" at Civic Center Drive. The Art Center is directly in front of you, accessible via the circle drive of the Mayo Civic Center.

Check out: [www.rochesterartcenter.org](http://www.rochesterartcenter.org)



**Bill Grumbine Private classes**



After Bill's demo the weekend of April 22<sup>nd</sup> and 23<sup>rd</sup>, he will be available for a few days for private classes for anyone who might be interested. Here are the details Bill sent: "I charge \$240/day per person for individual lessons, or if more than one person wants in on the same day, \$180/day. That is eight hours, or about 9:00 AM - 5:00 PM give or take. If we run over a little I do not worry about that. Here in my shop I have a limit of three, but that limit would be defined by the shop out there. Anyone interested will have to provide some sort of room and board for me, as well as transportation to wherever we are going to be and ultimately, back to the train station. I do not do sofa beds, but just about anything else will do. I can cover just about any aspect of turning that people want to cover from bowls to hollow forms to spindles. The one handicap I will have is being limited to the equipment on hand in whatever shop I am in. I can't teach someone how to hollow a piece if they don't have any hollowing tools, and I do not have the wherewithal to bring mine along with me. I intend to bring as many tools as I can carry on the train, but it won't be like I am in my truck."

He is also willing to do half day classes which would be 4 hours at \$120/person or \$90/person for more than one in a class. He will be available Monday, Tuesday and Wednesday (April 24, 25 and 26) with plans to head home on Thursday, the 27<sup>th</sup>. However, if he does not have anyone interested in the classes he will likely leave earlier in the week.

If you are interested in private classes with Bill, please contact him directly by email at [ultradad@enter.net](mailto:ultradad@enter.net) or [bill@wonderfulwood.com](mailto:bill@wonderfulwood.com) or by phone at 610-248-7661.

Check out Bill's web sites at: [www.wonderfulwood.com](http://www.wonderfulwood.com) or [www.enter.net/~ultradad](http://www.enter.net/~ultradad)

**Don't forget to start planning for:**

**AAW Symposium 2006**

June 22-24

Louisville, Ky

<http://www.woodturner.org/sym/sym2006>



This Symposium is 3 days, 30 Demonstrators & 120 Rotations.

Cost is \$245 (AAW members) **before May 16**, \$275 after.

\$285 (non-members) **before May 16**, \$315 after.

Onsite \$305 (member), \$345 (non-member).

The current issue of American Woodturner has several good articles about this years Symposium.

**Utah Woodturning 27th Symposium**

June 15-18

Provo, Utah

<http://www.utahwoodturning.com>



This Symposium is 3 days, 23 Demonstrators & 100 Rotations.

Cost is \$220 **before April 30**, \$270 after. Registration is usually sold out well before the Symposium.

**Hotel information**

from club member Lyle Solem.... We have been searching the Inter-net for a room at the AAW convention in Louisville. The host hotel is The Galt House Hotel at \$90.00 plus parking. I just registered Donna and myself at the Comfort Inn Downtown in Louisville for a AAA and/or Senior rate of \$87.89 which includes free parking and continental breakfast. Their phone number is 502-583-2841 Fax # is 502-583-2629. This hotel appears to be closer to the convention center then the Galt. The agent told me it was two blocks away.

**Check out CRW's web site for more photos and information.**  
<http://www.crwoodturner.com>

Art Ustby, Secretary  
1923 Wood  
La Crosse, WI 54603

Phone: 608-781-0914 H  
Phone: 608-787-1270 W  
Email: ustby@charter.net

**"A Turn For the Better"**

*Mail Merge goes here.*

**Next Meeting -We will meet at the Denis Falch Studio.**

**9:00 Saturday, March 18, 2006.**

Here's a map to help those who aren't sure where we will meet. ....>

There are two streets for the same location. 1763 Gilmore Valley Road (formerly County Road 21), in Winona, sort of.

We'll start the program promptly, so you'll need to be a little early just to get one of The Uecker Seats. Remember—you have to bring your own chair to have a place to sit.

If you get lost or delayed, call Denis at (507) 454-0403 before the meeting for help or commiseration.

We'll have coffee, so donuts are ALWAYS welcome. And maybe something chocolate for that special person.

