

Coulee Region Woodturners Chapter of the American Association of Woodturners

Next Meeting—Sat., 19 November 2005, 9:00 AM ☺ — at the Reilly Studio in Elgin, MN

PAM REILLY, MEMBER DEMONSTRATOR

Pam Reilly is a quasi-full-time turner from Minnesota, who specializes in lidded boxes and open forms with a mosaic motif surface enhancement. She has work in private collections in the US, Canada and Hong Kong, and has had her work publicly critiqued at the last two AAW Symposia Instant Gallery Critiques. Pam has been featured in Woodturning Design Magazine's Reader Showcase and wrote an article for the magazine about her lidded boxes.

For this meeting, Pam will demonstrate her mosaic motif - the jigs used, pattern design, how the motif is applied, and various texturing methods.

Prez Sez

Well, here it is November. Coming into turkey time. From the looks of the Packers and Vikings seasons so far, we won't be watching them in the playoffs. [Ed: Go Bears!] We could be watching the Badgers though. With disappointing football, what is there to do during November and December? I know - turn wood!! November is a great time to get your Christmas presents made (if you haven't started yet, you are in the same boat I'm in, and we both are in trouble).

If you missed the Jamie Donaldson demo, all I can say is you missed an excellent demonstration! Jamie did an excellent job of showing us different variations on making log sections into bowls. Quite an assortment and a lot of fun. He also showed us how to make a photo tent and highlights of taking GOOD pictures of your work. We have the entire demonstration on video. Art is going to try and put it on DVD. We will have copies available for checkout from the library soon. We had approximately 26 people attend the demo. We had anticipated at least 30 and that is what we set the price for admission on. I've asked those who attended to contribute another \$4.00 (well worth it) to help eliminate the shortfall. Thank you to those who did help out. The clean up crew did an excellent job! A big thanks to Brigitta Gautsch and Maxine Holz (Ed's wife) for the two batches of chili they supplied for the event. Some good eating there.

For those of you who did not attend, I am looking for some feedback as to why we did not make our goal of 30 people (I'm an engineer and am always asking why. Just ask my folks). If you did not attend, I would like for you to drop me a line, e-mail or phone call and let me know why. Was it you weren't familiar with Jamie and/or his work? Was the timing wrong? Was the time of year wrong? Again, I am just looking for feedback so we can avoid a shortfall next time and still continue to have professional demonstrators in. Thanks in advance for your feedback.

Speaking of feedback, everything I have heard from Jamie's demonstration has been extremely positive.

We are on track for the Legacy Challenge. We currently have 100 pens committed (40 received) and 58 bowls committed (15 received). Here is a quote from Liz Schank of Holmen High School that I received via e-mail:

Dear Mr. Hill~

I would like to thank you and the Coulee Region Woodturners, for your generous donation of wooden bowls for our upcoming "Empty Bowls Soup Event" on Friday, December 9, 2005. In our 6th year, we continue to be amazed by the interest and success generated through this event. The "Empty Bowls" project was established to support the efforts of local organizations promoting the education and/or well-being of our area kids (kids of all ages...as I like to think of myself, as well as the entire community as kids that are simply chronologically-enhanced). This year our benefactor for "Empty Bowls" is the new Holmen YMCA. A wonderfully-fun resource for the whole family.

Please extend my highest compliments to all of the CRW's artists for their simply astounding talents in the woodturning art form. Thank you again for thinking of us at Holmen High School, and I hope that members of the Coulee Region Woodturners can join us on our evening of soup celebration from 4 - 8 p.m. in the High School Commons area.

I am also interested in the various woods used to create these lovely bowls, and the proper care that we should extend to the patrons that acquire them.

We still have room for more bowls. I also have some pen kits left over, if anyone else would like to turn pens. Remember to bring your bowls and pens to the November meeting. If you can't make the meeting, give me a call about dropping them off. Again, we are trying to get the pens out to the troops for Christmas.

Hope you and your family have a safe and Happy Thanksgiving. Also hope to see you at Pam's for the November meeting. Until then, keep the chips flying, your tools sharp and your cuts clean.



Reminder—

The crew for helping to set up and clean up for the October meeting is: Roger Stenhoff, Jim Stromberg, Tom Weeks, Terry Snowden. The understanding is that you get your replacement if you're unable to attend.

Open Shop Nights

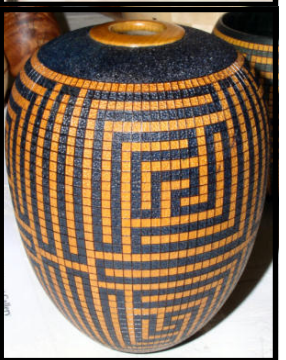
Duane Hill again hosts, Thursdays, November 3 and 17. Open shop starts at 7:00 and goes until 9ish (heavy on the ish).

From Duane Hill—Legacy Challenge

Bowls and pens are due in at the November meeting. If you did not commit to either bowls or pens, you can still participate. All entries are accepted. Pens will be sent to the Onalaska National Guard troops currently stationed in Iraq. Bowls will be going to the Holmen High School Open Bowls Project. They will be having their supper on Friday, December 9 from 4-8pm in the commons area.

Meeting Review

In October we had two days with Jamie Donaldson, at the B&B Studio in Onalaska. We were shown how to make a variety of log-based forms [see Page 4]. Jamie also reviewed the Instant Gallery, where a very interesting collection of new work was on display. Pictures from the weekend are below and on the following pages.



Sanding on the Lathe, by Mike Schwing

Every woodturner likes to take advantage of the lathe to help with what is typically considered a chore – sanding. It is hard to resist the fact that you can spin the work and hold a piece of sandpaper against the work and the entire surface is quickly sanded. However, the results from doing so are far from extraordinary. Circular scratches that scribe the entire diameter of the bowl from rim all the way down to the center are inevitable with this method. This type of sanding scratch is very difficult to remove and they are one of the telltale signs of a turner who does not have high standards for his work.

These scratches result from the work surface spinning so quickly that the same tiny pieces of sanding grit remain in contact with the work for several or many revolutions. The problem can be minimized with hand sanding in a few ways, but rarely totally eliminated.

If you are committed to hand sanding with the lathe running, the following tips may help you minimize these types of scratches.

1. Keep the sandpaper moving randomly over the surface. Never let it rest for even a moment on the spinning surface.
2. Run the lathe at a VERY low speed.

This minimizes the length of a scratch as you move the sandpaper over the spinning surface.

3. Do both number 1 and 2 at the same time.
4. Do not skip grits.
5. When you have finished with one grit, stop the lathe, lock the spindle and go over the surface with that grit by hand, with the grain direction. You will normally be able to remove any circular scratches.
6. Wipe off the surface with a cloth to remove any lingering sanding grit. If you skip this step you will often have scratches reappear with the next grit.
7. Move on to the next grit, and repeat steps 5 and 6 and 7 until you are satisfied.

You will probably find that your surface appearance has improved quite a bit if you were not doing something like this before. One of the reasons is that hand sanding with the grain will reveal surface detail that cross grain or circular sanding cannot. This is due to the light reflection characteristics of the sanding scratches and not technique. Make sure your last few passes with the sandpaper go with the grain.

Power sanding

A more productive method of sanding involves not only lathe rotation but sandpaper rotation as well. There are many “power

sanders” available on the market. I will make only one recommendation based on what I use – the “wave” sanding discs. (www.woodturnerscatalog.com) and their soft backing pads. This system is used in a hand held drill and produces excellent results. The method is exactly the same as above, except that you are not holding the paper by hand. The faster the drill speed the better, as is the slower the lathe speed the better. I use grits in the following order – 80, 120, 180, 220, 320. I then move to Micro-Mesh sandpaper from 1500 to 12,000 grit if necessary. With a high drill speed, step number 5 above should take only 15 or 20 seconds per grit. Just go over the surface very quickly and lightly with the spindle locked. When you do it correctly all scratches disappear.

I power sand just about everything in this manner and have no fear of people critiquing my work up close for sanding scratches. The one area I still have to work on is sanding details like rim treatments or bottom ogees, etc.. It is hard to get up close to them without destroying the detail. I have found little gems hard to beat for that....Sanding Sticks by Woodcraft

<http://www.woodcraft.com/>

Pump House Show—From Duane Hill Items for display for the Pump House show are needed by the November meeting. Contact Jim Cox or one of the officers if you will not be at the meeting. The “Meet the Artists” night is Friday, December 2. The Pump House Show will run from the end of November through the end of January.



Pump House Show Pictures—from Pam Reilly

Since our webmaster would like to have pictures of submissions for the Pump House show to put on the club website, I am offering use of my photo booth for anyone interested. Since the next meeting is at my house, I’ll have my photo booth set up in the basement and anyone who would like can feel free to take pictures of their work at the end of the meeting for submission to Ken. So, bring your submissions and your camera! If you don’t have a digital camera, don’t worry – Ken will bring his camera and tripod, and of course, I’m sure our faithful club photographer will be chomping at the bit to see just how many pictures he can fit on one memory card. Hey Art, maybe you ought to bring an extra one :-))))



The News

- November 3** Open shop night at Duane Hill studio.
- Nov 11-12** A-Line Woodworking Show demos.
- November 17** Open shop night at Duane Hill studio.
- Nov 19** At Pam Reilly's new shop, in Elgin, MN. Come see how she makes those geometric mosaic bowls and vessels.
- Dec 2** Pump House "Meet the Artists" reception, 5-7 PM.
- Dec 17** At Gautsch's, with Mark Duginske giving a detailed day on band saws—setup, maintenance, use, blades, etc. Plus an opportunity to buy Marks's books, order a saw and/or supplies, or at least get an informed recommendation.

- January 21** CRW member Greg Haugen will demo a variety of game calls. Location TBD.
- February 18** CRW member Duane Hill will demo craft show kits - i.e., perfume pens, letter openers, bracelet helpers, etc. Location TBD.
- March 18** Hollowing tool comparison - we just need to determine how many different tools will be shown and who will demo them - any volunteers ?? Location TBD.
- April 15** Professional turner Bill Grumbine demo.
- 2006 Autumn** Professional turner Russ Fairfield demo.
- Want Ads/Sale Ads** If it's pertinent to woodworking or woodturning, get it to Aaron and he'll publish it in the newsletter.

Here are some specific Jamie Donaldson objects that we learned to make at his demonstrations. None of these were sanded or finished, but they were turned to completion. You can appreciate the degree of difficulty of these when you add the sanding and quest for flawlessness to these rather complex shapes.



The Cranky Turner emailed that he thought the appropriate caption for this picture is - ACHTUNG!



From The Neighbors
 The Rochester Art Center is organizing a contemporary woodturning exhibition from Jan 28, 2006 through March 19, 2006. The exhibition will have two galleries. The first gallery will be an invitational exhibit of nationally recognized woodturning artists.

The second gallery is a juried gallery of woodturning works from Minnesota, Wisconsin, Iowa, Illinois, and North and South Dakota. All participants must be 18 years old and all works must be original and completed within the last two years. No works over 3ft x 3ft x 3ft will be accepted. \$500 in

cash awards will be given. Dates for submitting work are January 5-10, 2006. Judging will take place on January 12, 2006. Judges for this exhibition are Alan Lacer, Mel Turcanik, and Dean Wilson. If you need more information, contact one of the CRW officers.

Bendable Thickness Calipers, by Ken Grunke



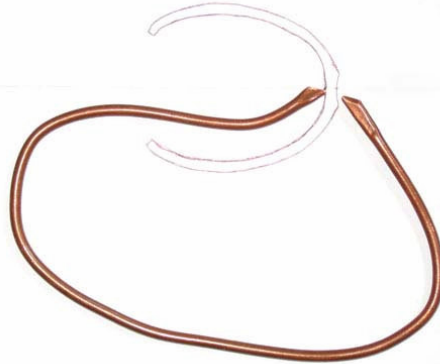
Many woodturners use thickness calipers made from stiff wire to judge the thickness of vessels, but I like soft copper tubing--it's stiffer, less "springy", but still easy to bend. Also, softer, and less likely to scratch the wood.

I ended up with a few yards of 3/16" OD thermostat tubing pulled from an old school building, used to make the 7" long cali-

pers shown in the attached pictures. Choose a tubing size that suites the scale of turning you do--for big vessels, over 16" deep, 1/2" or 3/4" tubing would be appropriate.

Bend to the desired shape, flatten the ends, and nip them off at about a 45-degree angle. Use a file and/or sandpaper to round and soften the tips.

If you line up the angled ends with each other when setting the calipers, you only need to keep the outer end perpendicular to the vessel's curvature to get an accurate reading at any point.



A-Line Show and Demonstration

A-Line Machine Tools will be having the annual fall woodworking show on Friday, November 11 and Saturday, November 12 from 9 AM to 7 PM., CRW will be demonstrating throughout the show. Schedule for CRW demonstrators is as follows:

Name	Friday			Saturday		
	9:00 AM	1:00 PM	4:00 PM	9:00 AM	1:00 PM	4:00 PM
Rich Egan	X					
Denis Falch		X				
Aaron Gesicki			X	X	X	
Ken Grunke				X		
Greg Haugen				X	Talker	X
Duane Hill	X		X		X	
Bob Patros				Talker		
Art Ustby	X					



From Jim Cox

The Pump House show - "Wood Turned Beautiful" - will run from November 28, 2005 to January 7, 2006. We are going to be limited to only one room at the Pump House and this means that we are limited on how many pieces can be displayed. Thus, we are asking if anyone has a bookcase that they have built in the past (or in the very near future) that we could borrow for the show. We would like to have bookcases that are fairly tall and have at least five or more shelves. If you have one or two that we could borrow please email me cswoodworking@charter.net or call (608-786-2327) or contact Mike Henderson. I will be able to pick up and return the bookcases with my vehicle. Please contact me as

soon as you can. We will be setting up the show on Saturday, November 26 and taking the show down on January 7th and 8th, so please mark your calendars.

If we can round up at least six or more bookcases, we could easily have a few hundred woodturnings. If you are a new member within the last year and a half, and missed it, the last show that we had was great. Opening night we had close to 175 people, despite a huge snow/ice storm that day. According to the Pump House staff this was one of the biggest openings that they had ever had for a show.

Any pieces that you display must have your name, the species of the wood, for sale or not for sale (nfs), and the value of each piece taped to each one. This is for insur-

ance purposes, whether or not you want to sell it. The Pump House will be selling any pieces for us at the show, will take care of all of the paper work, monies and having the person pick up the piece after the show. They will take 35 percent of the selling price for their commission, so price your piece with that in mind.

We are also going to be having a silent auction during the show for the "Empty Bowl Project". The money raised will be donated to local food pantries and the winner will be bidding on a turned bowl donated by our members. We are still looking for any one that would like to donate a bowl for this auction. It can be any size and color. Remember that this is for a good cause for our community, so the more the better.

Aaron Gesicki, Secretary
18153 Icicle Road
Sparta, WI 54656

Phone: 608-269-7559 H
Phone: 608-269-2195 W
Phone: 608-343-1538 M
Fax: 608-269-8334
Email: Aaron@centurytel.net

**Print this last page from the Single Page
Mail Merge Document.**

"A Turn For the Better"

Mail Merge goes here.

**Next Meeting – at the Pam Reilly Studio in
Elgin, MN.
9:00 AM ☀ Saturday, 19 November 2005.**

Directions to the Reilly Studio -

720 Riverwood Court, Elgin, MN.

I-90 to exit 224 (Eyota)
Go north on Highway 42, then continue north
to and then across Highway 14.
From Highway 14 continue north on Highway
42 approx. 9 miles – then turn right onto
County Road 73 (dirt).
After ½ mile, take first left onto unmarked dirt
road – 720 is second house on left.

Please don't park on the grass.

If you get lost, call Pam (507) 876-1195

